

PUBLIC ACT 51, SECTION 18j, MCL 247.668j
Annual Certification of Employee-related
Conditions

CERTIFICATION YEAR 2023

COUNTY ROAD AGENCY NAME Osceola County Road Commission

Beginning September 30, 2015, and annually each September 30 thereafter, certification must be made for compliance to Section 18j(1) of Public Act 51 of 1951, MCL 247.668j(1). A local road agency must certify that it has (a) developed an employee compensation plan for its employees as described OR (b) the local road agency must certify that medical benefits are offered to its employees or elected public officials in compliance with the publicly funded health insurance contribution act, 2011 PA 152, MCL 15.561 to 15.569, or, that it does not offer medical benefits to its employees or elected public officials.

Compliance with (1)(a)
I certify compliance with MCL 247.668j(1)(a).
Our compensation plan for employees meets the minimum criteria of MCL 247.668j (a)(i - iv).

Compliance with (1)(b)
I certify compliance with MCL 247.668J(1)(b), and as such, offer one of the following:

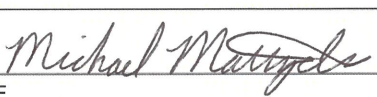
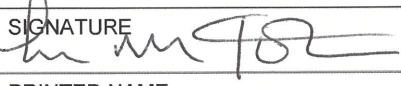
I certify that medical benefits are offered to employees or elected public officials in compliance with the publicly funded health insurance contribution act, 2011 PA 152; or

I certify that the local road agency has exempted itself from the publicly funded health insurance contribution act, 2011 PA 152; or

I certify that medical benefits are not offered to employees or elected public officials.

Non-compliance with (1)(a) or (1)(b)
I certify that we are not in compliance with MCL 247.668j(1).
I understand that failure to comply with certification of (a) or (b) of MCL 247.668j(1) may result in the withholding of all or part of the distributions made to this local road agency from the Michigan Transportation Fund.

This form must be signed by the Chairman of the County Road Commission or the County Executive and the Chief Financial Officer of the County Road Agency.

SIGNATURE 		SIGNATURE 	
PRINTED NAME Michael Mattzela		PRINTED NAME Lee Johnson	
TITLE Engineer-Manager	DATE 09/19/23	TITLE Finance Director - Clerk	DATE 09/19/23

Due Each September 30

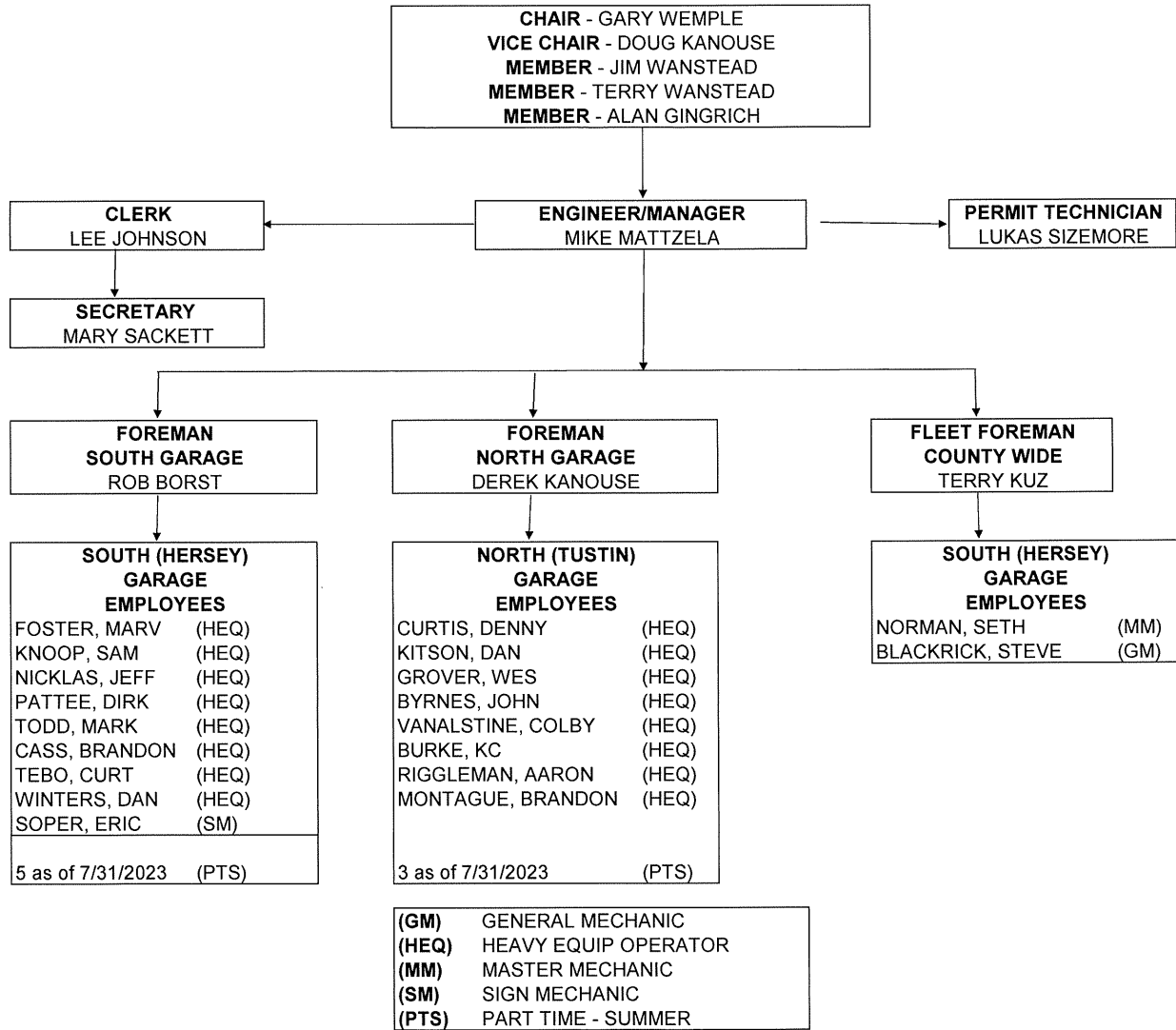
Return the completed form to:

Michigan Department of Transportation, Financial Operations Division, P.O. Box 30050, Lansing, MI 48909, **OR**

E-mail to: MDOT-Outreach@Michigan.gov, **OR**

Fax to: (517) 335-1828

**OSCEOLA COUNTY ROAD COMMISSION
ORGANIZATIONAL CHART
July 31, 2023**



Osceola County Road Commission

Active Employees

As of July 31, 2023

Road Commissioners	5	Chair, Vice-chair, Member (3)
Management	7	Manager, Clerk, Secretary, Foreman (3), Permit Technician
TPOAM	19	Heavy Equipment Operator (17), Mechanic (2)
Temporary	8	Labor

Unfunded Liabilities

The unfunded liabilities of the Osceola County Road Commission are currently available on a website maintained by the Michigan Department of Treasury

http://www.michigan.gov/treasury/0,1607,7-121-1751_31038---,00.html

This site contains the audit reports filed by all local agencies. By selecting a year, the appropriate county and the selecting the Road Commission, the unfunded liabilities can be found within the audit report.

Job Classifications and Wage Rates

As of July 31, 2023

<u>Job Classification</u>	<u>Wage Rate</u>
Engineer/Manager	\$90,397 /yr
Foreman - Field	\$62,116 /yr
Foreman - Fleet	\$59,303 /yr
Clerk	\$63,648 /yr
Secretary	\$22.50 /hr
Permit Technician	\$24.60 /hr
Heavy Equipment Operator	\$23.55 /hr
Light Equipment Operator	\$23.19 /hr
Sign Mechanic	\$23.55 /hr
General Mechanic	\$23.81 /hr
Master Mechanic	\$25.76 /hr
Temporary Labor	\$16-\$18 /hr

Commissioners Names and Contact Information

CHAIR	Gary Wemple 22645 Tustin Road, Tustin MI 49688 231-829-3713
VICE CHAIR	Douglas Kanouse 16795 15 Mile Road, LeRoy MI 49655 231-768-4728
MEMBER	Jim Wanstead 8982 Lakola Road, Reed City, MI 49677 231-357-7964
MEMBER	Alan Gingrich 17828 180th Ave, LeRoy MI 49655 231-388-2337
MEMBER	Terry Wanstead 17861 180th Ave, LeRoy MI 49655 231-357-8189

OSCEOLA COUNTY ROAD COMMISSION									
2023 BUDGET									
			ORIGINAL						
			BUDGET						
			12/2/22						
REVENUES:									
Motor Transportation Fund									
Engineering			10,000						
Primary Road			3,999,000						
Local Road			2,451,000						
Snow Removal			52,000						
State Critical Bridge			-						
Forest Road Funds			51,000						
State - D									
State - PA 82 Funds									
Federal Funds									
Fed. Critical Bridge Funds			-						
Fed. STP			600,000						
Federal Buyout Funds									
County Raised Funds									
Township Contributions			900,000						
Other Revenues									
Other Contributions			10,000						
Salvage Sales			10,000						
Interest Earned			12,000						
Royalties			400						
Permits			30,000						
Instalment Purchases / Leases			-						
TOTAL REVENUES			8,125,400	-	-	-	-	-	-
EXPENDITURES:									
Primary Road Fund									
Primary Heavy Maint									
Expenditure - Road			1,450,000						
Expenditure - Bridges			-						
Maintenance									
General Maintenance			1,500,000						
Winter Maintenance			600,000						
Structure Maintenance			-						
Local Road Fund									
Local Heavy Maintenance									
Expenditure - Road			1,000,000						
Expenditure - Bridges			30,000						
Maintenance									
General Maintenance			1,900,000						
Winter Maintenance			450,000						
Structure Maintenance			-						
Equipment Expense									
Direct			1,200,000						
Indirect			500,000						
Operating			350,000						
Less:									
Rental			(1,900,000)						
Administration									
Net			500,000						
Less:									
Discounts			(200)						
Capital Outlay									
Equipment Purchases			1,000,000						
Interest Expense -Bldgs & Equip			30,000						
Less:									
Depreciation			(650,000)						
Gain / Loss on Disposal			-						
Retirements (Trade-in)			-						
Other									
Debt Principle Payments - buildings			160,000						
Debt Principle Payments - equip			-	-	-	-	-	-	-
TOTAL EXPENDITURES			8,119,800	-	-	-	-	-	-
BUDGETED NET REVENUES (EXPENDS)			5,600	-	-	-	-	-	-
ACCUMULATED AVAILABLE UNAPPROP. SURPLUS									
(DEFICIT) FROM PRIOR YEARS									
PROJECTED SURPLUS (DEFICIT) AT THE END OF BUDGET YEAR									
			5,600	-	-	-	-	-	-